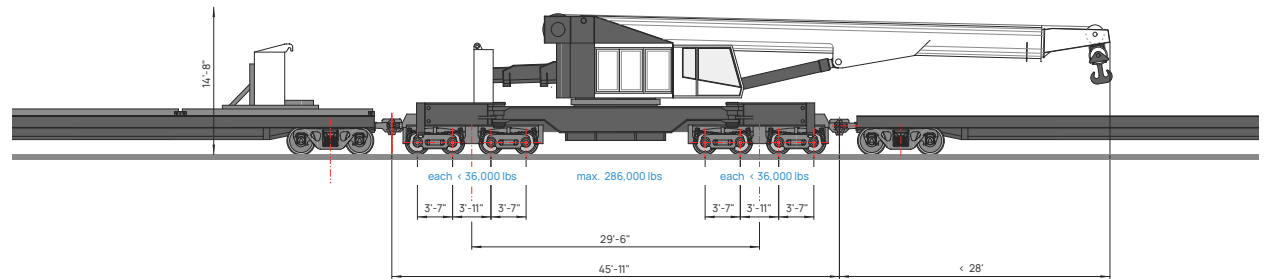


The world's strongest Telescopic Railway Crane



Up to 172-Ton Capacity



Exclusive Distributor for The Americas
of Telescopic Railway Cranes.

Key Benefits

40 Years of Expertise

At Railquip we have built expertise on the design, supply, installation & service & maintenance of heavy-duty railroad maintenance equipment across North America.

Designed to Fit the Purpose

Any technical data can be modified at the design stage if the progress allows for the requested modifications. Can be equipped to operate in super elevated curves under full capacity.

Stability & Safety Features

The cranes can be equipped with advanced stability & safety features to keep the crane's center of gravity point & ensure the protection of both personnel and machinery.

Preventive Maintenance

We offer turnkey service & preventive maintenance. Our dedicated service team will collaborate with yours to keep your operations running smoothly, preventing downtimes & unexpected issues.